

---

寄件者: Tang Lok San <[REDACTED]>  
寄件日期: 2026年01月12日星期一 13:06  
收件者: tpbpd/PLAND <tpbpd@pland.gov.hk>  
主旨: S. 16 Planning Application No. A/YL-KTN/1203 - FSI Proposal (Supplementary Information)  
附件: 1363 6.pdf  
類別: Internet Email

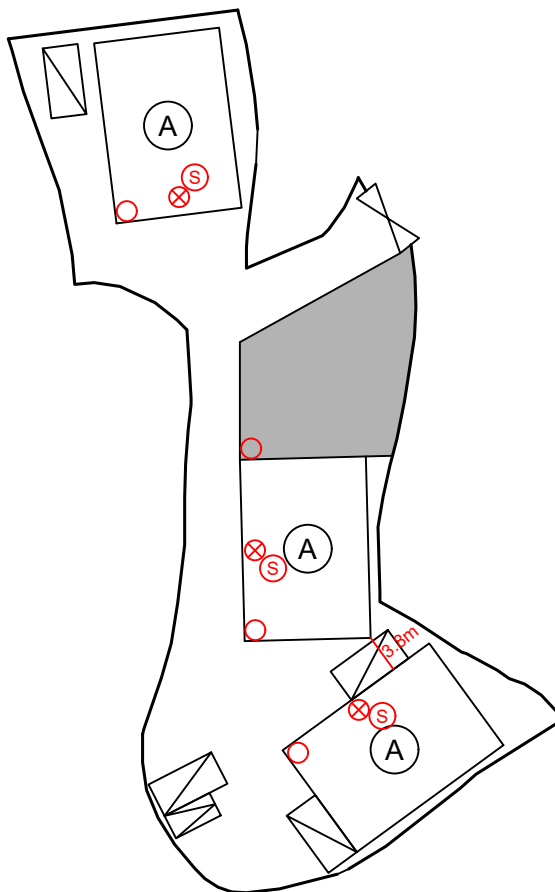
Sir/Madam,

Thank you for the phone call. Please see the attachment for [REDACTED] the FSI Proposal. Please contact Mr. Tang via email [REDACTED] if you have any question regarding to the captioned application.

Yours sincerely,  
Mr. Tang

## Proposed Structures Details

	Structures	Gross Floor Area (GFA)	Height (Not Exceeding)	Unit(s)
A	Warehouse (excluding D.G.G) with Ancillary Office	About 18m x 12.5m = 225 m <sup>2</sup>	8m	3
	Total	About 675 m <sup>2</sup>		
	Ancillary Open Storage Area	About 270 m <sup>2</sup>		
	Private Car Parking Space	5m x 2.5m		1
	LGV L/UL Space	7m x 3.5m		4



\*All FSI (includes installation/maintenance/modification/repair work) will be completed by RFSIC.

For Emergency Vehicular Access, Please see Appendix 6.2

\*All the enclosed structures are provided with access for emergency vehicles to reach within 30m travel distance from the structures.

### Legend:

○ 3 kg Portable Dry Powder Type Fire Extinguisher (4 in Total)

⊗ Stand-alone Fire Detector (Smoke Detector) (In accordance with the Stand-alone Fire Detector General Guidelines on Purchase, Installation & Maintenance [Sep 2021]) (3 in Total)

--- Emergency Vehicular Access

Ⓐ Warehouse (Excluding D.G.G.) with Ancillary Office

▢ Private Car Parking Space

▢ Open Storage Area

▢ LGV L/UL Space

### Appendix 6.1

Location: DD 109 Lot 1363 RP (Part)  
DD 109 Lot 1371

OZP: S/YL-KTN/11  
District: Kam Tin North  
Zoning: Agriculture

Date: 12 January 2026

### Proposed Fire Service Installation Plan

擬議消防設備安裝計劃圖

Proposed Temporary Warehouse (excluding Dangerous Goods Godown) with Ancillary Facilities and Associated Filling of Land for a Period of 3 Years

### SCALE

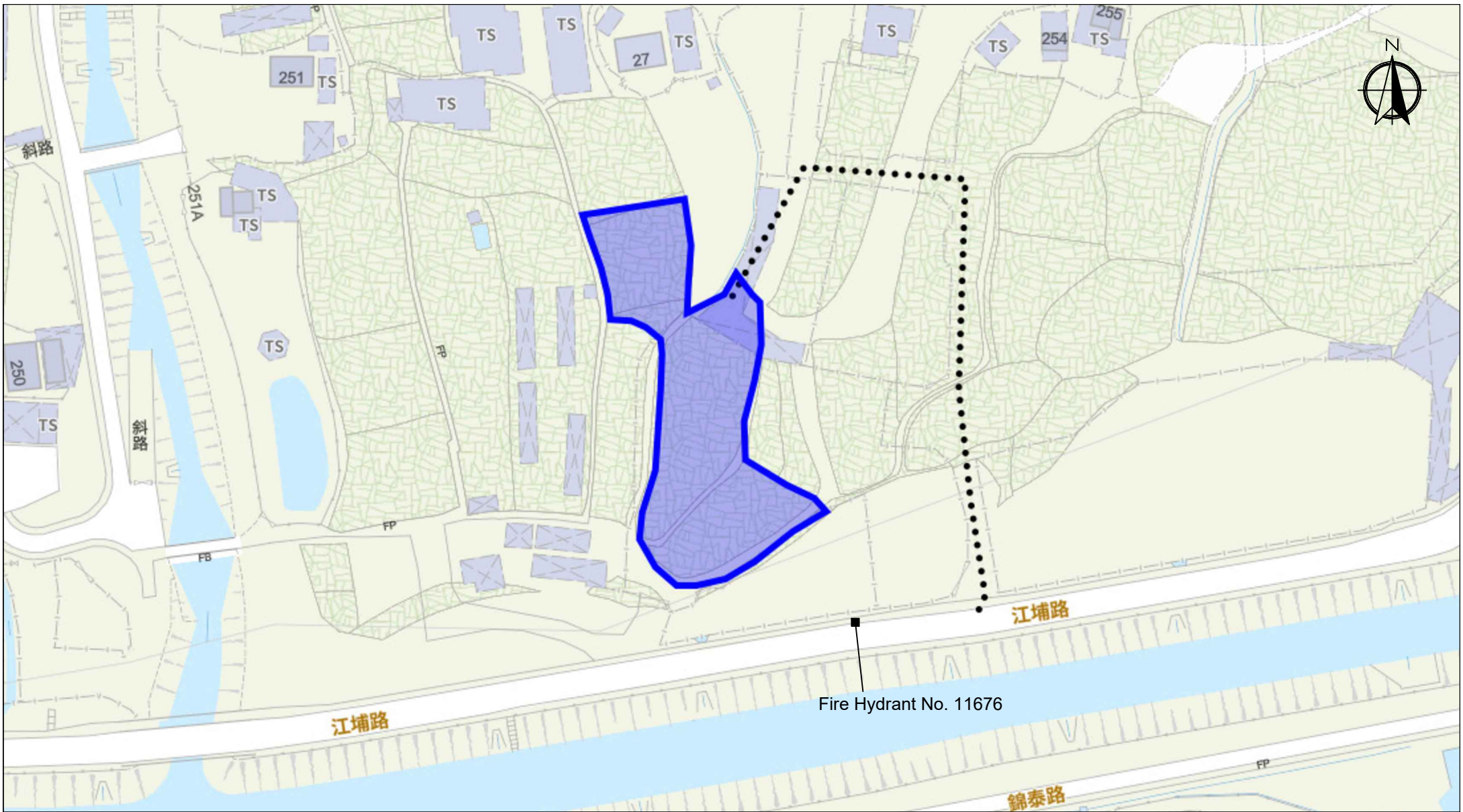
1:750

@A4

For Identification Only

Drawing No.:

6-1



Scale: Undefined @A4

Captured from map.gov.hk on 23<sup>rd</sup> December 2025

<b>Appendix 6.2</b> <b>Emergency Vehicular Access</b>	Location: D.D. 109 Lot 1363 RP (Part) and 1371 OZP: S/YL-KTN/11 District: Kam Tin North Zoning: Agriculture	Project: Proposed Temporary Warehouse (excluding Dangerous Goods Godown) with Ancillary Facilities and Associated Filling of Land for a Period of 3 Years	Width of Kong Po Road: 6m (About) Map Legend: ●●●● Road Path — Site Boundary	Drawing No.: 6-2
				For Identification Only Date: 12/01/2026